

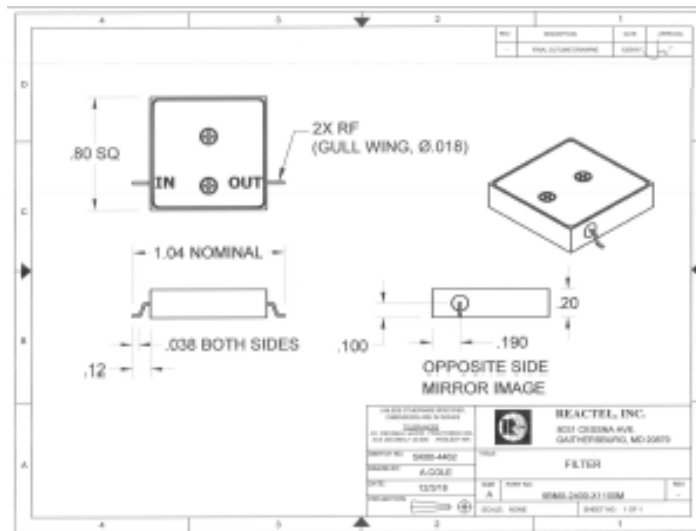
# Reactel, Incorporated

Reacting First to All Your Filter Needs.

## Bandpass Filter

### 9BMX-2400-X1100-M

This bandpass filter features low loss and high selectivity in a very compact package. Reactel manufactures a wide variety of RF & Microwave Filters, Multiplexers and Multifunction Assemblies. Please contact the factory with your specifications.



### Specifications

Center Frequency	2400 MHz
Passband	1100 MHz, minimum
Insertion Loss	$\leq 1.0$ dB @ CF $\leq 2.0$ dB @ Passband
VSWR	$\leq 1.5:1$ @ Passband
Attenuation	$\geq 50$ dB @ 1400 MHz $\geq 60$ dB @ 3400 MHz
Group Delay	$\leq \pm 2$ nS @ Passband
Connectors	Gull Wing Pins in / out
Size	0.2" high x 0.8" wide x 0.8" long, nominal excluding connectors

8031 Cessna Avenue • Gaithersburg, Maryland 20879  
Phone: 301-519-3660 • Fax: 301-519-2447 • [reactel@reactel.com](mailto:reactel@reactel.com) • [www.reactel.com](http://www.reactel.com)  
twitter: <http://twitter.com/reacteljim> • ISO 9001:2008 Accredited

Picture shown above may not be an actual representation of the unit described.